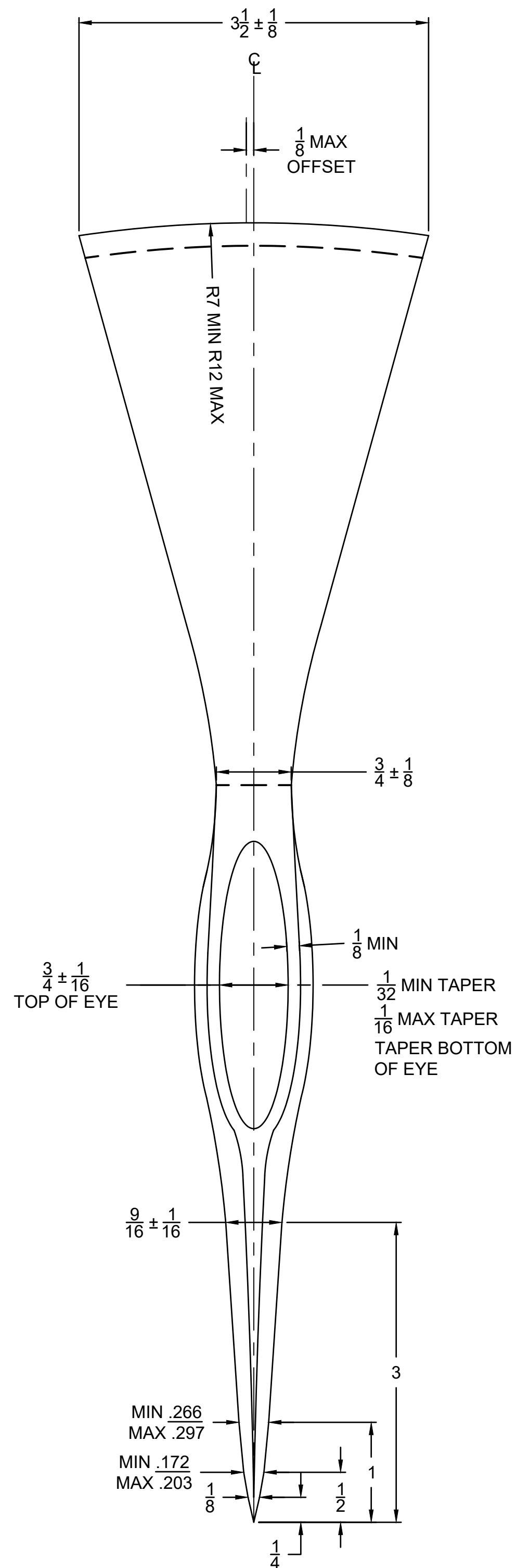
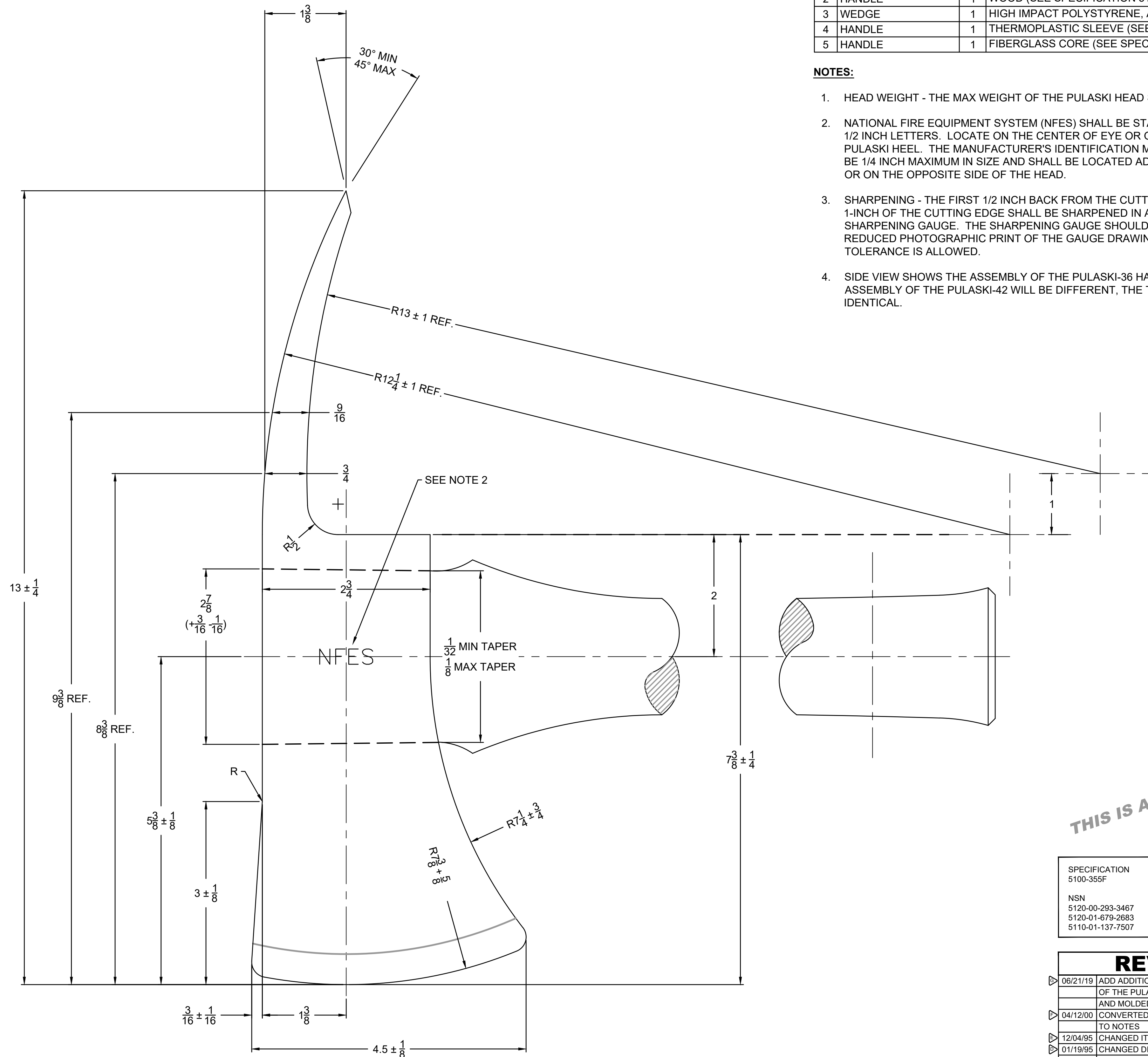


6/21/19 07:04 THORNBROWN D:\DATA\CURRENT PROJECTS\NTDP-632 - PULASKI\TDP-632-1.DWG



**SHARPEN AS PER GAUGE
ON SHEET 2
SEE NOTE 3**

1 TOP VIEW
SCALE: 1:1



SEE NOTE 4

2 SIDE VIEW
SCALE: 1:1

MATERIAL LIST			
NO	PART NAME	REQD	MATERIAL - DESCRIPTION
1	PULASKI HEAD	1	(SEE SPECIFICATION 5100-355F)
2	HANDLE	1	WOOD (SEE SPECIFICATION 5100-355F)
3	WEDGE	1	HIGH IMPACT POLYSTYRENE, ABS OR PVC/PLASTIC
4	HANDLE	1	THERMOPLASTIC SLEEVE (SEE SPECIFICATION 5100-355F)
5	HANDLE	1	FIBERGLASS CORE (SEE SPECIFICATION 5100-355F)

NOTES:

- HEAD WEIGHT - THE MAX WEIGHT OF THE PULASKI HEAD SHALL BE 4 LBS 2 OZ.
- NATIONAL FIRE EQUIPMENT SYSTEM (NFES) SHALL BE STAMPED AS SHOW IN 1/4 TO 1/2 INCH LETTERS. LOCATE ON THE CENTER OF EYE OR ON THE FLAT AREA NEAR THE PULASKI HEEL. THE MANUFACTURER'S IDENTIFICATION MARK OR TRADE MARK SHALL BE 1/4 INCH MAXIMUM IN SIZE AND SHALL BE LOCATED ADJACENT TO THE NFES MARK OR ON THE OPPOSITE SIDE OF THE HEAD.
- SHARPENING - THE FIRST 1/2 INCH BACK FROM THE CUTTING EDGE AND CENTER 1-INCH OF THE CUTTING EDGE SHALL BE SHARPENED IN ACCORDANCE TO THE SHARPENING GAUGE. THE SHARPENING GAUGE SHOULD BE FABRICATED USING A REDUCED PHOTOGRAPHIC PRINT OF THE GAUGE DRAWING THEREFORE NO TOLERANCE IS ALLOWED.
- SIDE VIEW SHOWS THE ASSEMBLY OF THE PULASKI-36 HANDLE. WHILE THE ASSEMBLY OF THE PULASKI-42 WILL BE DIFFERENT, THE TOOL HEAD DIMENSIONS ARE IDENTICAL.



United States Department of Agriculture
Forest Service

WO
WASHINGTON OFFICE

STAMPS, LOGOS, AND SEALS

△		
△		
△		
△	SEE REVISION NOTES - SHEET 01	N/A
NO.	REVISION / ISSUE	DATE

PROJECT NAME

PULASKI TOOL

**NATIONAL TECHNOLOGY
& DEVELOPMENT
PROGRAM**

SAN DIMAS, CALIFORNIA
MISSOULA, MONTANA

DRAWING TITLE

**PULASKI TOOL
TOP VIEW
SIDE VIEW**

SPECIFICATION	UNLESS OTHERWISE SPECIFIED
5100-355F	TOLERANCES:
NSN	FRACTIONS $\pm .0625$
5120-00-293-3467	DECIMALS $\pm .005$
5120-01-679-2683	ANGLES $\pm 1'$
5110-01-137-7507	DIMENSIONS ARE IN INCHES
	BREAK SHARP EDGES

REVISIONS	
06/21/19	ADD ADDITIONAL SHEETS FOR INCLUSION OF THE PULASKI-42 FIBERGLASS HANDLE AND MOLDED HANDLE COVER
04/12/00	CONVERTED TO AUTOCAD & CHANGE TO NOTES
12/04/95	CHANGED ITEM 2-HANDLE DIM. ON SHEET 2
01/19/95	CHANGED DIM. ON ITEM 2 HANDLE AS NOTED ON SHEET 2
12/11/92	ADD 1/8 MAX OFFSET ON HOE END, MADE RADIUS A REF DIM. AND 1-3/8 A REF DIM. ADD HANDLE DRAWING TO SHEET 2
07/08/86	CHANGE DIMS. FROM FRACTIONS TO DECIMALS ON AX BLADE TIME AND SHARPENING GAUGE
04/01/86	ADD NOTE 9 - REVISE NOTES AND REDRAW SHEET 1

THIS IS A REDUCED PRINT

DATE	ARCHIVE NO.
06/21/2019	NTDP-632_1.DWG
DESIGNER	DRAWING SHEET NO.
NTDP	01
DRAWN	
T.BROWN	
CHECKED	
S.WU	
PROJECT NO.	SHEET 01 OF 04
NTDP-632	



United States Department of Agriculture
Forest Service

WO
WASHINGTON OFFICE

STAMPS, LOGOS, AND SEALS

⚠		
⚠		
⚠		
⚠	SEE REVISION NOTES - SHEET 01	N/A
NO.	REVISION / ISSUE	DATE

PROJECT NAME

PULASKI TOOL

NATIONAL TECHNOLOGY
& DEVELOPMENT
PROGRAM

SAN DIMAS, CALIFORNIA
MISSOULA, MONTANA

DRAWING TITLE

**WOOD HANDLE, WEDGE,
AND SHARPENING
GAUGE DETAILS**

DATE: 03/20/2019 ARCHIVE NO.: NTDP-632_2.DWG

DESIGNER: NTDP DRAWING SHEET NO.

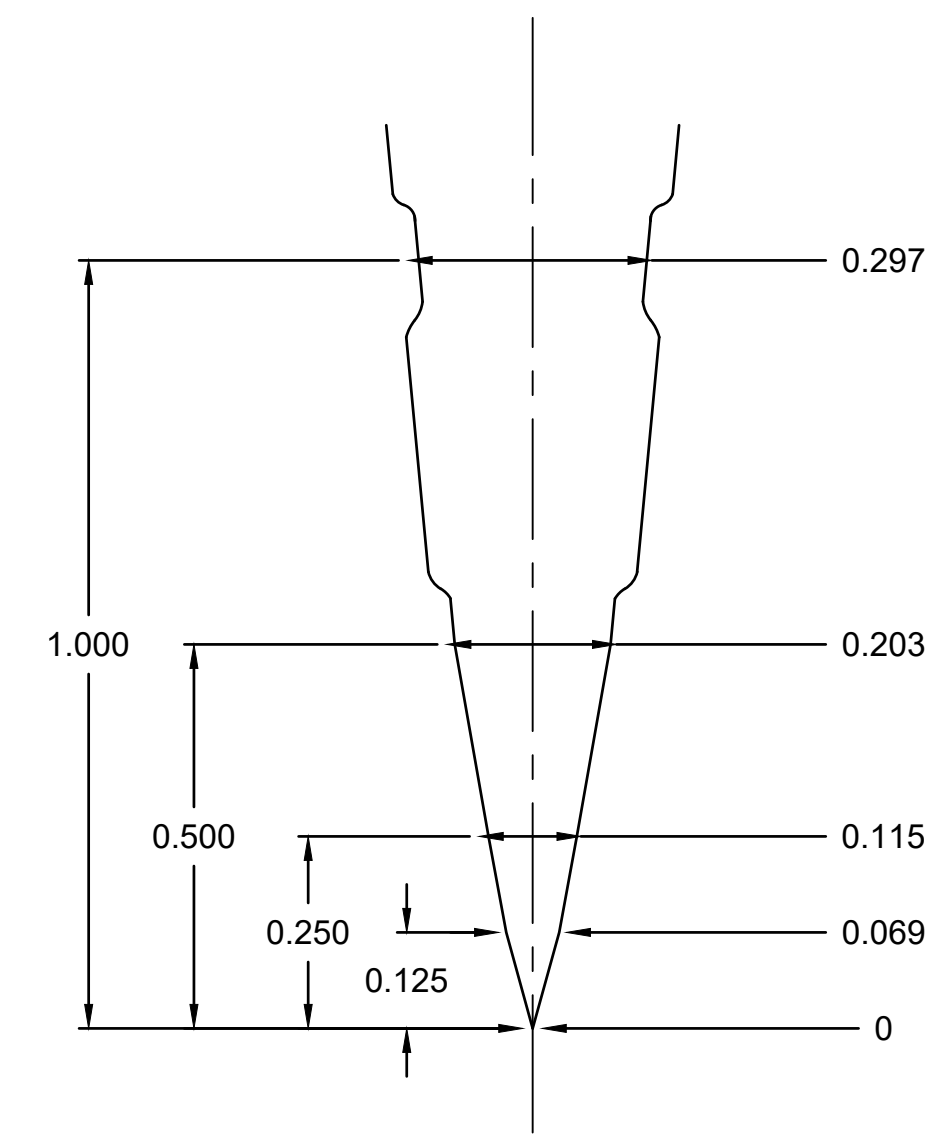
DRAWN: T.BROWN **02**

CHECKED: S.WU

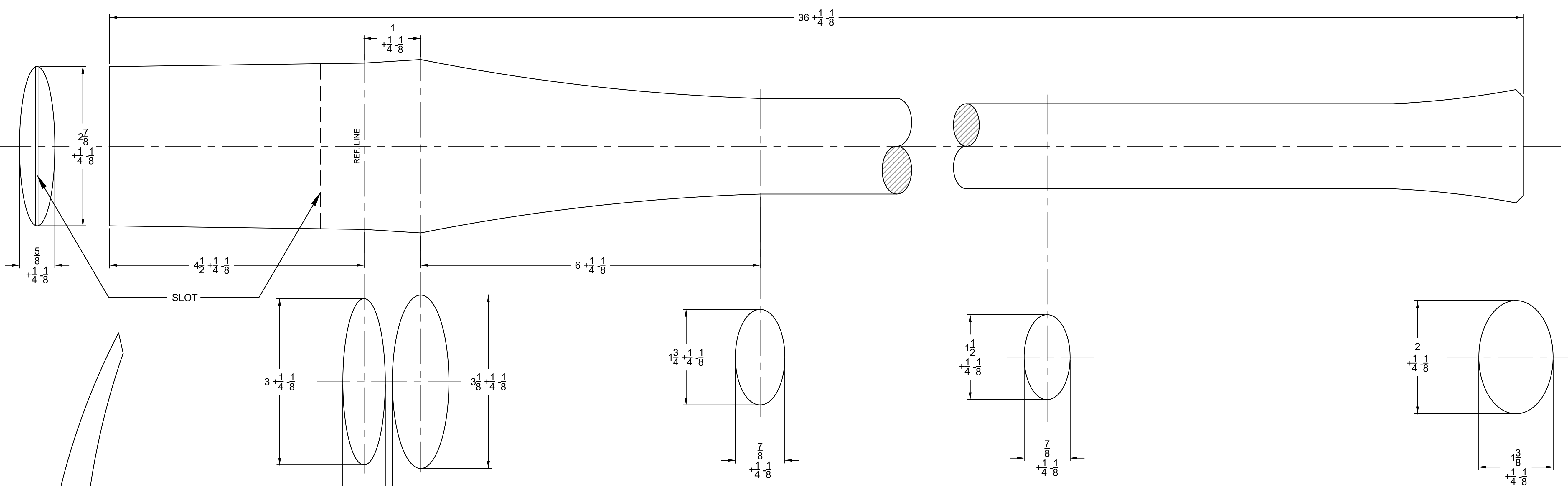
PROJECT NO.: NTDP-632 SHEET 02 OF 04

THIS IS A REDUCED PRINT

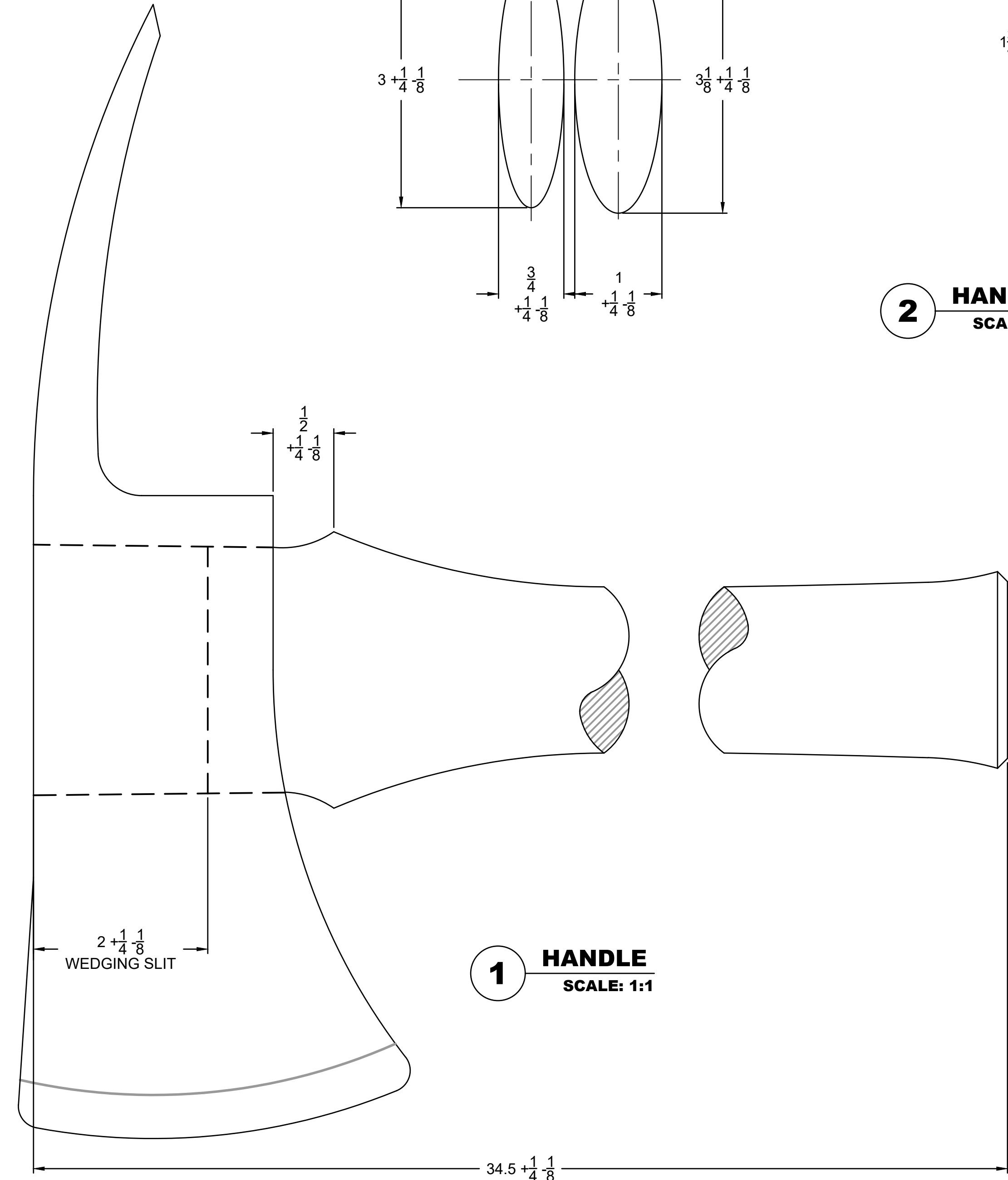
SPECIFICATION 5100-355F	UNLESS OTHERWISE SPECIFIED
NSN 5120-00-293-3467 5120-01-679-2683 5110-01-137-7507	TOLERANCES: FRACTIONS $\pm .0625$ DECIMALS $\pm .005$ ANGLES $\pm 1^\circ$ DIMENSIONS ARE IN INCHES BREAK SHARP EDGES



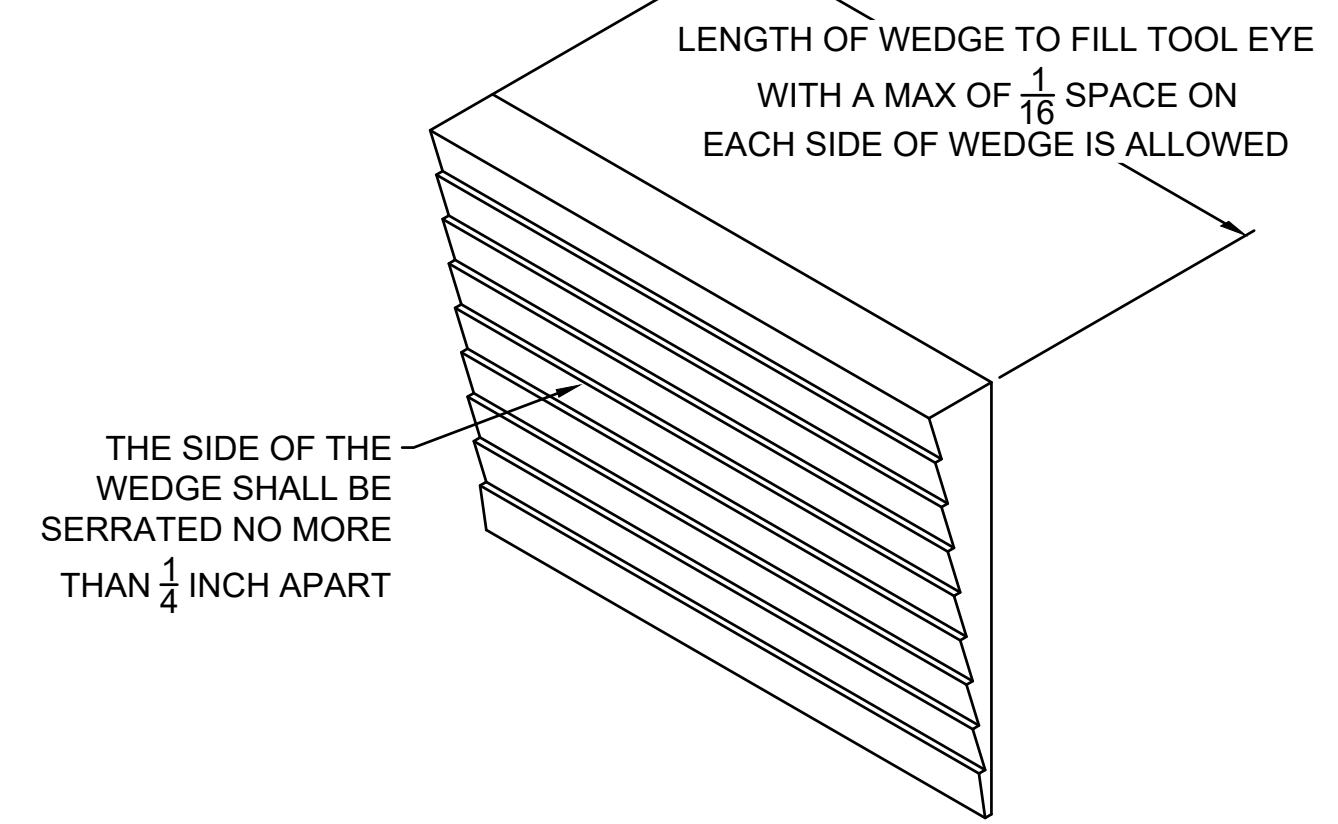
5 SHARPENING GAUGE
SCALE: 4X
SEE NOTE 3



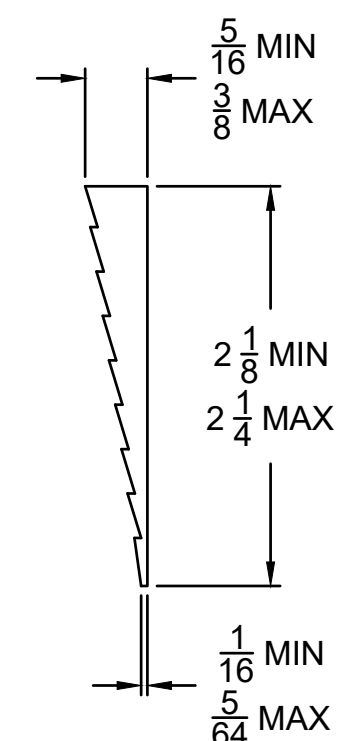
2 HANDLE
SCALE: 1:1



1 HANDLE
SCALE: 1:1



4 WEDGE
SCALE: N.T.S.



3 WEDGE - SIDE VIEW
SCALE: 1:1

6/21/19 06:59 THORNBROWN D:\DATA\CURRENT PROJECTS\NTDP-632 - PULASKI\TDP-632-2.DWG



United States Department of Agriculture
Forest Service

WO
WASHINGTON OFFICE

STAMPS, LOGOS, AND SEALS

△		
△		
△		
△	SEE REVISION NOTES - SHEET 01	N/A
NO.	REVISION / ISSUE	DATE

PROJECT NAME

PULASKI TOOL

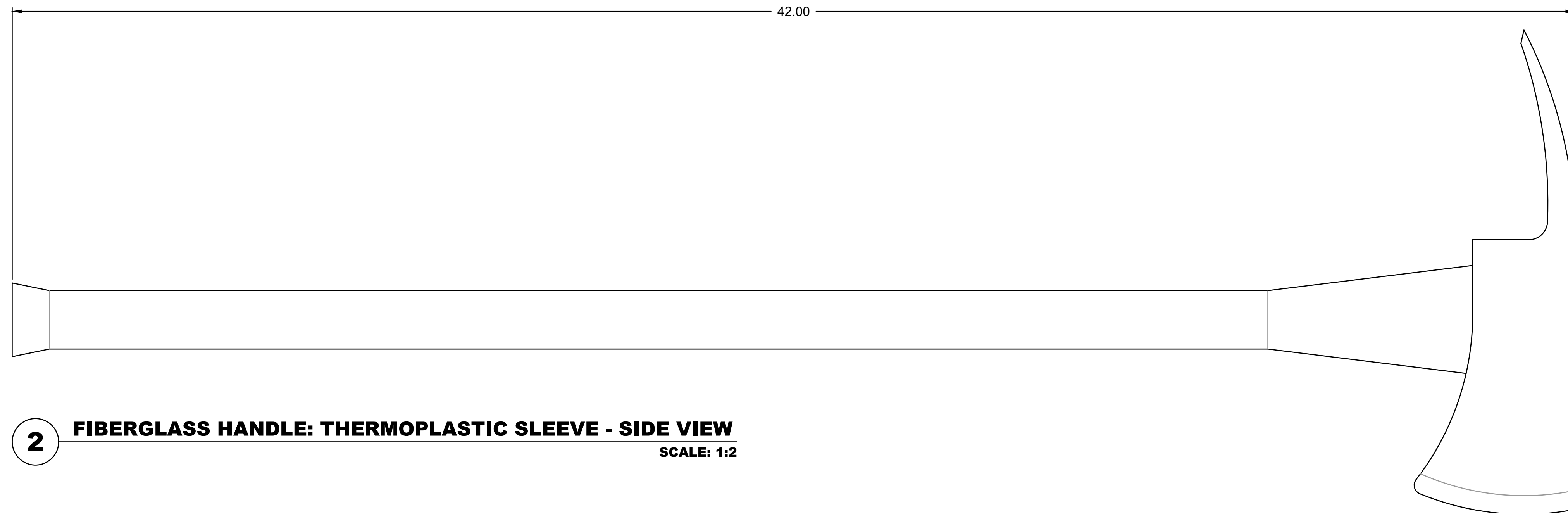
NATIONAL TECHNOLOGY
& DEVELOPMENT
PROGRAM

SAN DIMAS, CALIFORNIA
MISSOULA, MONTANA

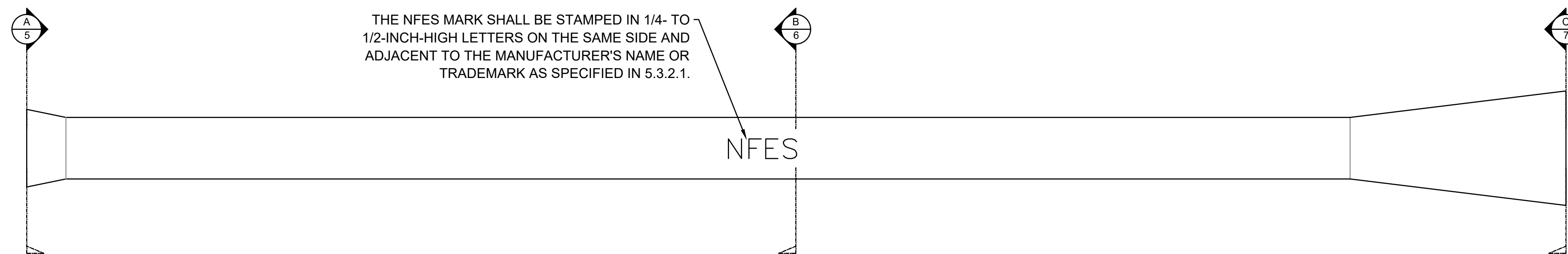
DRAWING TITLE

**FIBERGLASS HANDLE -
THERMOPLASTIC
SLEEVE DETAILS**

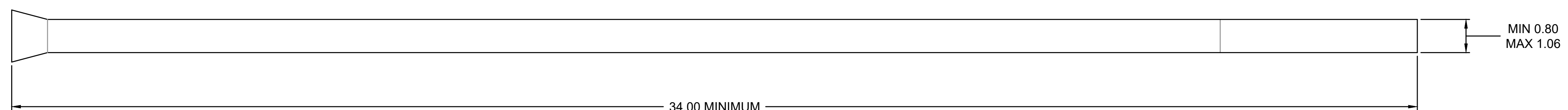
DATE 06/21/2019	ARCHIVE NO. NTDP-632_3.DWG
DESIGNER NTDP	DRAWING SHEET NO.
DRAWN T.BROWN	03
CHECKED S.WU	
PROJECT NO. NTDP-632	SHEET 03 OF 04



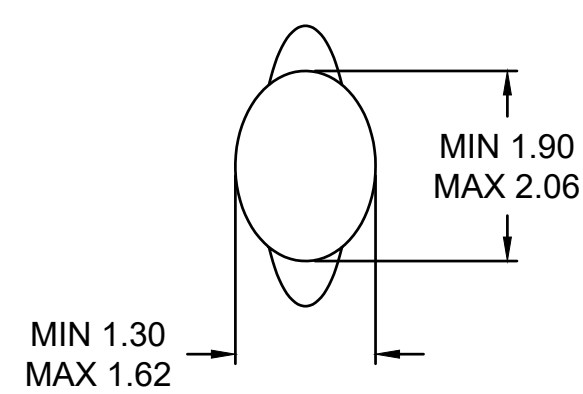
2 FIBERGLASS HANDLE: THERMOPLASTIC SLEEVE - SIDE VIEW
SCALE: 1:2



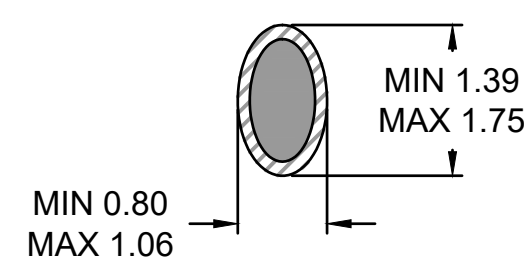
3 SIDE VIEW
SCALE: 1:2



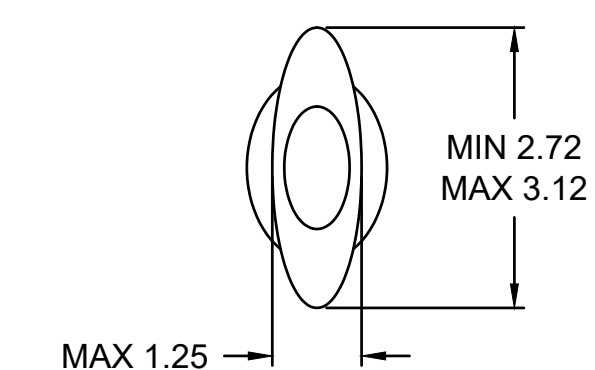
4 FRONT VIEW
SCALE: 1:2



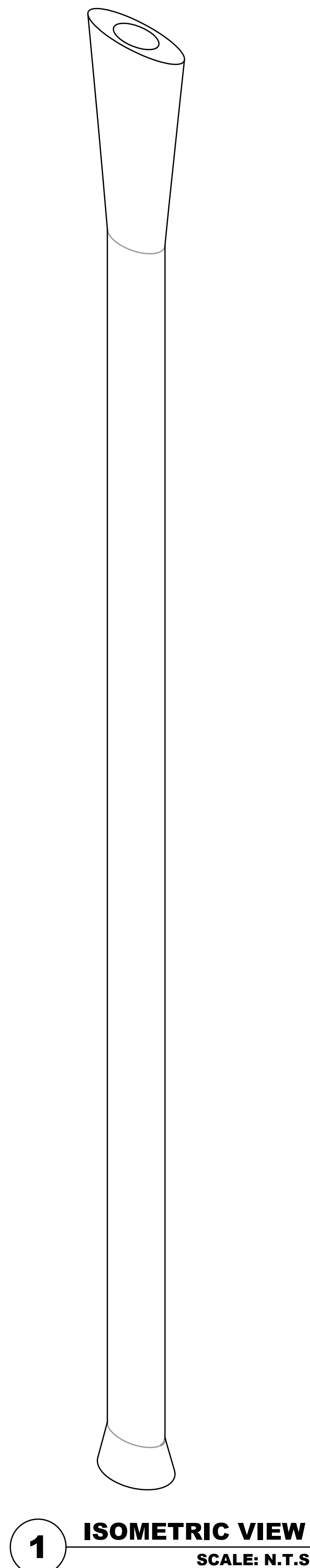
5 SECTION - A (BOTTOM)
SCALE: 1:2



6 SECTION - B (MIDDLE)
SCALE: 1:2



7 SECTION - C (TOP)
SCALE: 1:2



1 ISOMETRIC VIEW
SCALE: N.T.S.

UNLESS OTHERWISE NOTED
THE FOLLOWING
TOLERANCES APPLY:
1 PLACE (X.X) ±0.1
2 PLACES (X.XX) ±0.03
3 PLACES (X.XXX) ±0.010
DIMENSIONS ARE IN INCHES
BREAK SHARP EDGES

THIS IS A REDUCED PRINT



United States Department of Agriculture
Forest Service

WO
WASHINGTON OFFICE

STAMPS, LOGOS, AND SEALS

⚠		
⚠		
⚠		
⚠	SEE REVISION NOTES - SHEET 01	N/A
NO.	REVISION / ISSUE	DATE

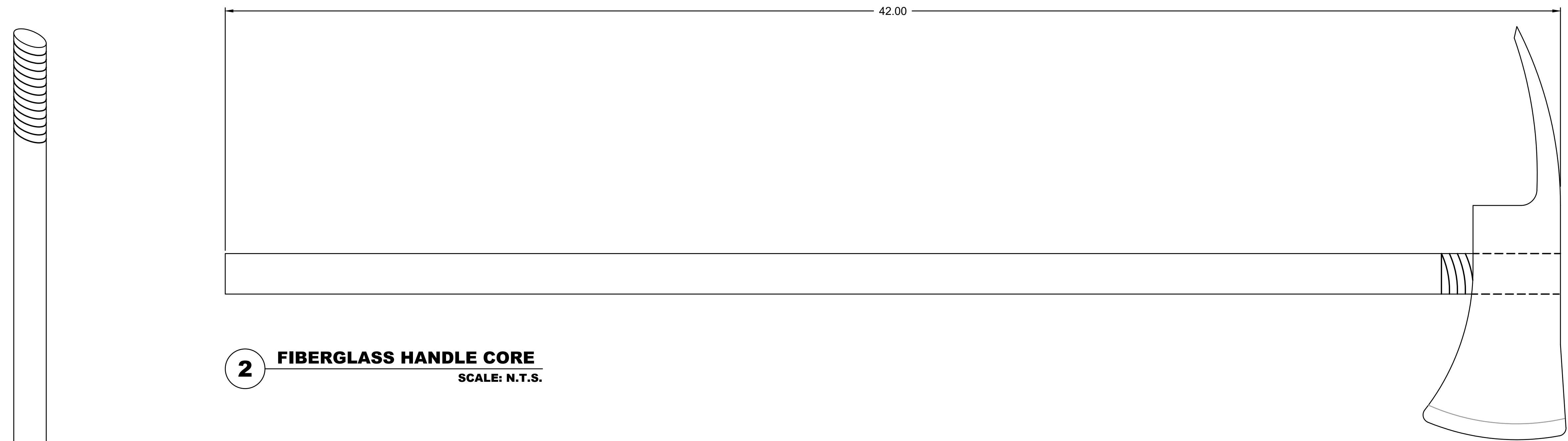
PROJECT NAME
PULASKI TOOL

NATIONAL TECHNOLOGY
& DEVELOPMENT
PROGRAM

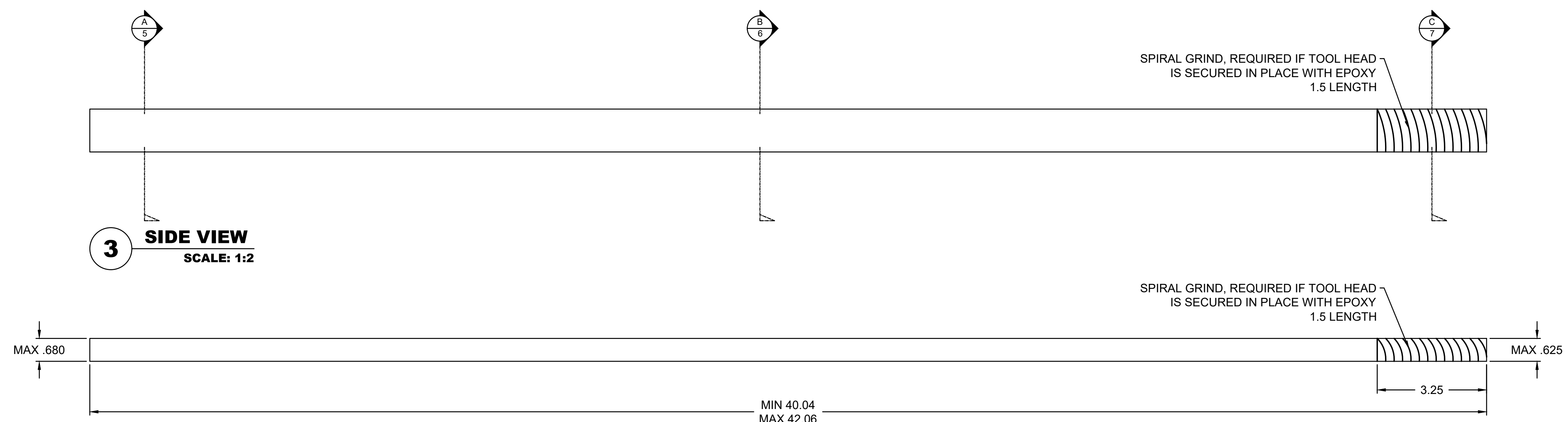
SAN DIMAS, CALIFORNIA
MISSOULA, MONTANA

DRAWING TITLE
**FIBERGLASS HANDLE -
FIBERGLASS CORE
DETAILS**

DATE 06/21/2019	ARCHIVE NO. NTDP-632_4.DWG
DESIGNER NTDP	DRAWING SHEET NO. 04
DRAWN T.BROWN	
CHECKED S.WU	
PROJECT NO. NTDP-632	SHEET 04 OF 04

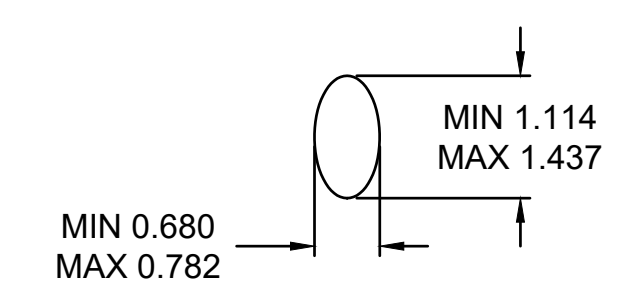


2 FIBERGLASS HANDLE CORE
SCALE: N.T.S.

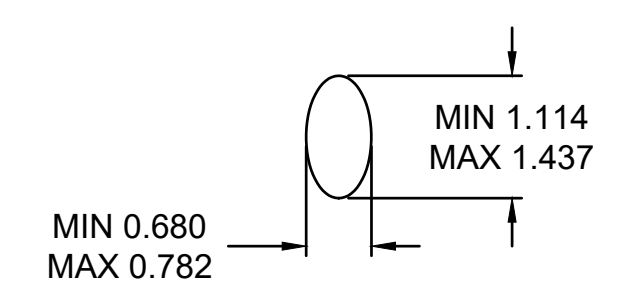


3 SIDE VIEW
SCALE: 1:2

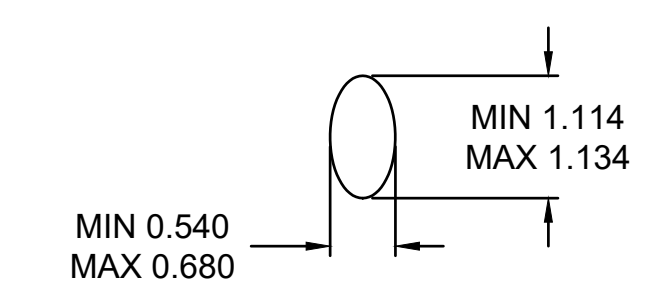
4 FRONT VIEW
SCALE: 1:2



5 SECTION - A (BOTTOM)
SCALE: 1:2



6 SECTION - B (MIDDLE)
SCALE: 1:2



7 SECTION - C (TOP)
SCALE: 1:2

1 FIBERGLASS HANDLE
SCALE: N.T.S.

THIS IS A REDUCED PRINT

UNLESS OTHERWISE NOTED
THE FOLLOWING
TOLERANCES APPLY:

1 PLACE (X.X) ±0.1
2 PLACES (X.XX) ±0.03
3 PLACES (X.XXX) ±0.010
DIMENSIONS ARE IN INCHES
BREAK SHARP EDGES