

C. DISSTON.

HAND-SAW.

No. 186,814.

Patented Jan. 30, 1877.

Fig. 1.

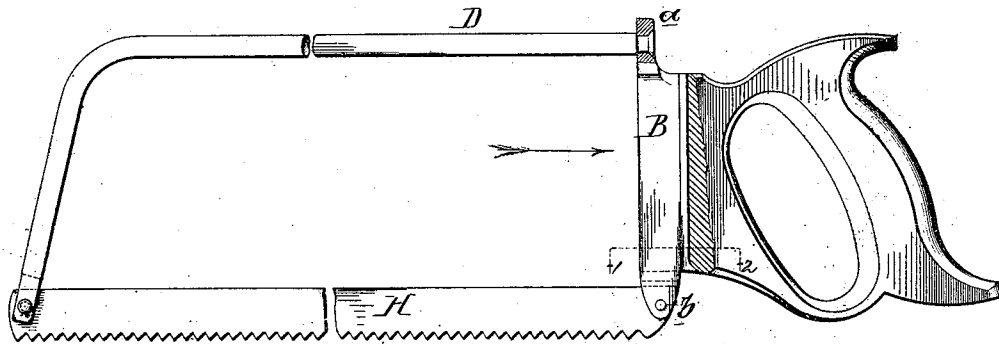


Fig. 5.



Fig. 3.

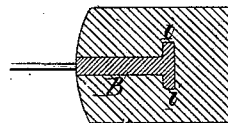


Fig. 2.

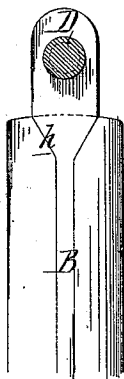
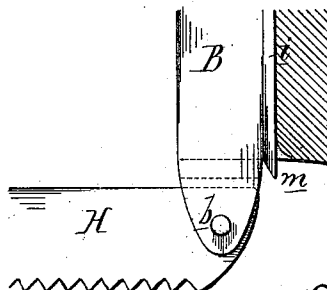


Fig. 4.



Witnesses
 Hermann Hoessner
 Henry Smith

Charles Disston
 by his Attorneys
 Howson & Sons

UNITED STATES PATENT OFFICE.

CHARLES DISSTON, OF PHILADELPHIA, PENNSYLVANIA.

IMPROVEMENT IN HANDSAWS.

Specification forming part of Letters Patent No. **186,814**, dated January 30, 1877; application filed December 7, 1876.

To all whom it may concern:

Be it known that I, CHARLES DISSTON, of Philadelphia, Pennsylvania, have invented an Improvement in Handsaws, of which the following is a specification:

The object of my invention is to secure the frame and blade of a butcher's saw to the handle in the simple, economical, and effective manner which I will now proceed to describe, reference being had to the accompanying drawing, in which—

Figure 1 is a side view, partly in section, of my improved butcher's saw; Fig. 2, an enlarged view of the handle and part of the frame, looking in the direction of the arrow, Fig. 1; Fig. 3, a sectional plan on the line 1 2; Fig. 4, an enlarged view of a portion of Fig. 1; and Fig. 5 a perspective view of the bar, which is secured to the handle.

The frame of the saw is composed of the bar B and rod D, one end of the latter being riveted to a lug, *a*, on the bar, and the rod being bent at its outer end and slotted for the reception of the front end of the blade, to which the rod is riveted, the rear end of the blade being secured to the lower end of the bar B. The conformation of this bar will be best understood by reference to the perspective view, Fig. 5.

At the rear edges of the bar are two ribs,

so that a section is T-shaped, as shown in Fig. 3, and a similarly-shaped slot is cut in the handle. The bar is driven tightly into this slot as far as the shoulders *h*, and the bar may be retained in place by simply bending a small lip, *m*, at the lower end of the ribs against the handle.

In place of the straight ribs *i i* on the bar, there may be beveled ribs or a rib of a circular form, or the section of the bar may be of dovetailed form, and adapted to a dovetailed slot in the handle.

As the bar B consists of a simple piece of malleable cast-iron, and as there are none of the usual fastenings by which saw blades and frames are secured to the handle, it will be evident that economy and simplicity must be the result of my invention.

I claim—

The combination of the bar B, adapted to the handle, with the rod D, and blade, all substantially as set forth.

In testimony whereof I have signed my name to this specification in the presence of two subscribing witnesses.

CHARLES DISSTON.

Witnesses:

HERMANN MOESSNER,
HARRY SMITH.