

(No Model.)

L. F. MARKHAM.

SAW SET.

No. 325,101.

Patented Aug. 25, 1885.

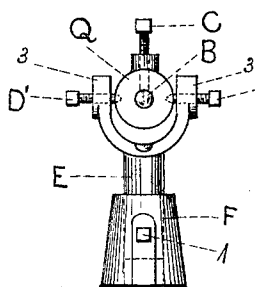
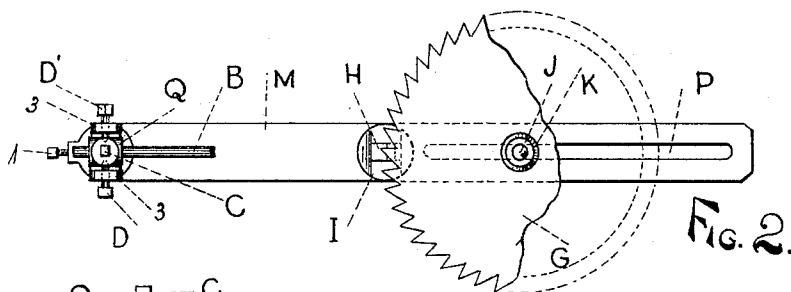
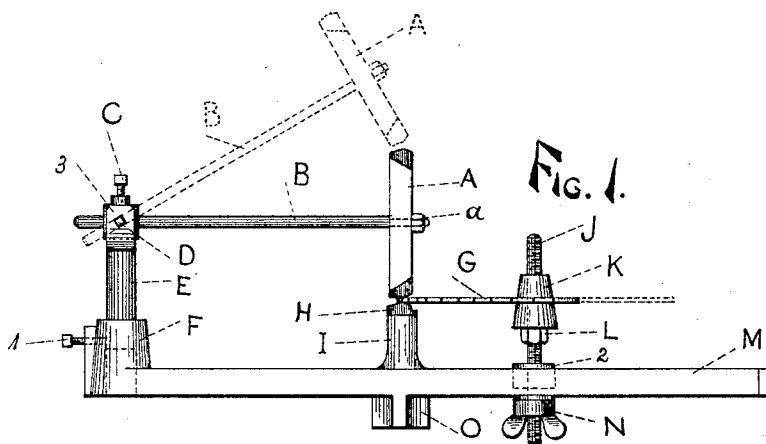


FIG. 5.

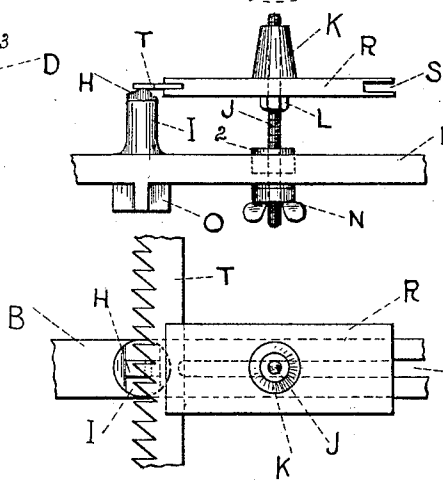


FIG. 3.

FIG. 4.

WITNESSES
Joseph M. Mason
William A. Chapman

INVENTOR
Larnard F. Markham
By *his* Attorney
G. E. Perkins

UNITED STATES PATENT OFFICE.

LARNARD F. MARKHAM, OF GRAND RAPIDS, MICHIGAN.

SAW-SET.

SPECIFICATION forming part of Letters Patent No. 325,101, dated August 25, 1885.

Application filed June 12, 1885. (No model.)

To all whom it may concern:

Be it known that I, LARNARD F. MARKHAM, a citizen of the United States, residing at Grand Rapids, in the county of Kent and State of Michigan, have invented certain new and useful Improvements in Saw-Sets; and I do declare the following to be a full, clear, and exact description of the invention, such as will enable others skilled in the art to which it appertains to make and use the same, reference being had to the accompanying drawings, and to the letters and figures of reference marked thereon, which form a part of this specification.

Figure 1 is a side view of my invention. Fig. 2 is a plan view of same, part of hammer gone. Fig. 3 is a side view of portion, same as Fig. 1, giving, additionally, view of band-saw support R. Fig. 4 is a plan view of same. Fig. 5 is a rear view.

Similar letters refer to similar parts throughout the several views.

My invention relates to improvements in saw-sets wherein both hammer and saw supports are removable and adjustable.

I describe my invention as follows: The hammer A is secured to the handle B by the nut a, the handle passing through the sleeve Q, and secured therein by the set-screw C, whereby it may be adjusted at any length of stroke desired. Said sleeve Q is supported by the set-screws D D', passing through the arms 3 3 of the trunnion forming the head of the movable post E. Said set-screws D D' have their points embedded in said sleeve, forming journal-bearings. The post E sets in the socket F, and may be adjusted and held at any required height by the set-screw 1, and thus the operator can regulate the angle at which the face of the hammer A shall strike upon the saw-tooth upon the anvil, and

so that the hammer shall strike back of the point and upon the root of said saw-tooth.

The base M of my invention, carrying the socket E at one end, is provided with an X-shaped projection upon its under side, whereby it is held rigidly upon the tool-bench. Upon its upper side, and integral therewith, is the anvil I, having the die H securely embedded therein, the face of said die forming an obtuse angle, as shown in Fig. 1.

Extending from near the bottom of the anvil to near the end of said base M is the slot P, adapted to hold the post J, being a screw from top to bottom, and fitted into said slot by the nut-slide 2, and fastened in said slot at any point desired by the thumb nut N. Said post J is used to carry the cone-shaped saw-support K, said cone being held at any point desired by the nut L. The conical shape of said saw-support adapts it to hold any size of circular saw within the capacity of said machine. Said post J is also used to hold the band-saw support R, slotted at both ends, as shown in Fig. 3, to receive saws of various thickness.

Having thus described my invention, what I claim, and desire to secure by Letters Patent of the United States, is—

The combination of base M, having slot P and the socket F, movable post E, arms 3 3, sleeve Q, hammer A B, anvil I, carrying die H, with the movable and adjustable screw-post J, adapted to bear the conical saw-support K or slotted saw-support R, all substantially as shown and described.

In testimony whereof I affix my signature in presence of two witnesses.

LARNARD F. MARKHAM.

Witnesses:

ADOLPH B. MASON,
WILLIAM A. CHAPMAN.