

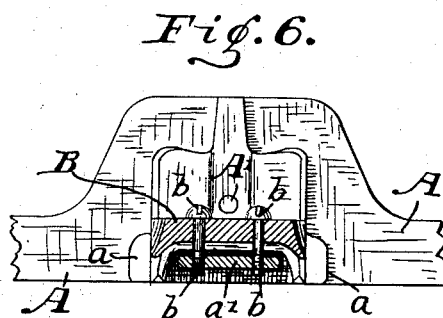
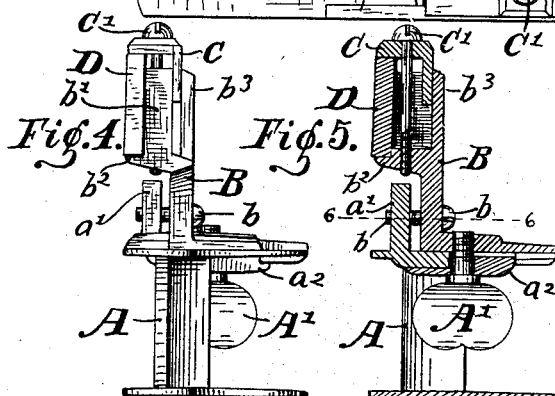
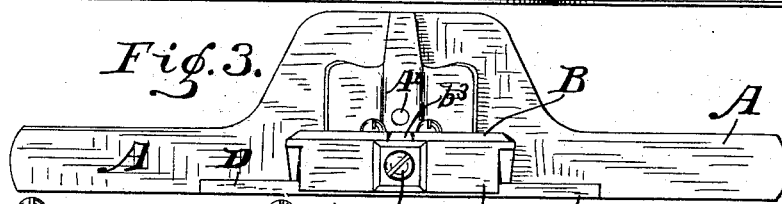
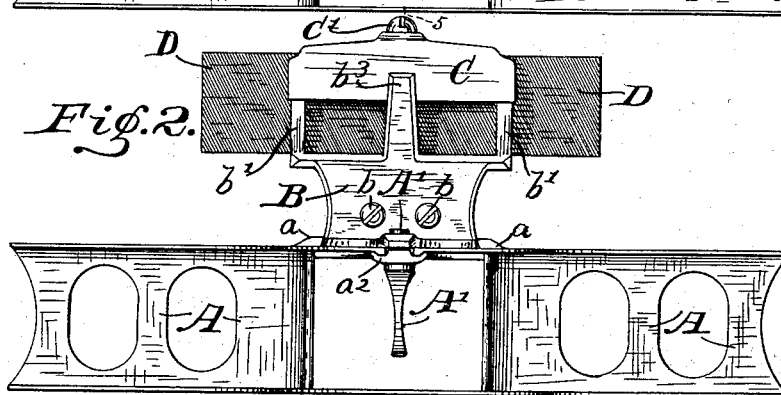
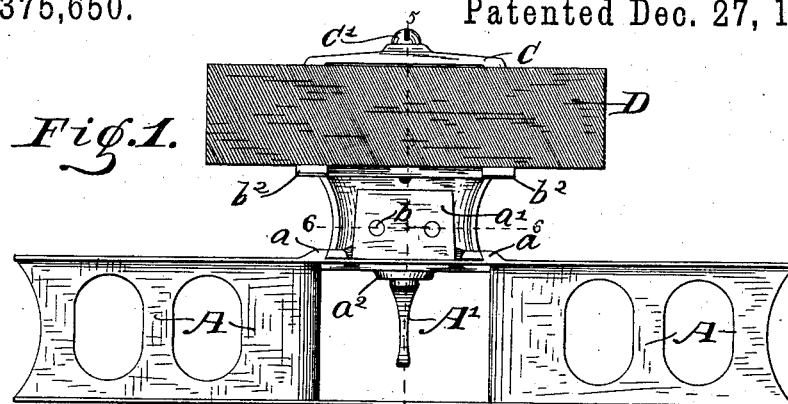
(No Model.)

R. E. POINDEXTER.

DEVICE FOR DRESSING THE TEETH OF SAWS.

No. 375,650.

Patented Dec. 27, 1887.



Chas Leonard.
Charles L Thurber.

INVENTOR.
Robert C. Poindexter,
PER
C. Bradford.
ATTORNEY.

UNITED STATES PATENT OFFICE.

ROBERT E. POINDEXTER, OF INDIANAPOLIS, INDIANA.

DEVICE FOR DRESSING THE TEETH OF SAWS.

SPECIFICATION forming part of Letters Patent No. 375,650, dated December 27, 1887.

Application filed July 30, 1887. Serial No. 245,095. (No model.)

To all whom it may concern:

Be it known that I, ROBERT E. POINDEXTER, of the city of Indianapolis, county of Marion, and State of Indiana, have invented certain new and useful Improvements in Saw-Dressers, of which the following is a specification.

The object of my said invention is to produce an inexpensive and easily-adjusted device by which the sides of the points of saw-teeth, particularly those of circular saws, may be conveniently dressed. Said object is accomplished by a device constructed and arranged in the manner hereinafter particularly described.

Referring to the accompanying drawings, which are made a part hereof, and on which similar letters of reference indicate similar parts, Figure 1 is a front elevation of a dresser embodying my said invention; Fig. 2, a rear elevation; Fig. 3, a top plan; Fig. 4, an end elevation; Fig. 5, a transverse vertical sectional view looking toward the right from the dotted line 5 5 in Fig. 1, and Fig. 6 a horizontal sectional view looking downwardly from the dotted line 6 6 in Figs. 1 and 5.

In said drawings the portions marked A represent the main portion of the frame-work of the dresser; B, the adjustable portion of the frame-work, mounted on said portion A; C, the clamp by which the file is secured in position, and D said file.

The portion A is of the general construction shown, and is formed with a true face, which rests against the side of the saw when the device is being used. Projecting portions on the rear side form a handle, by which it may be held to position, and the upper one of which also forms a bearing or seat for the adjustable frame B. Small projections or lugs *a* and a larger projection or lug, *a'*, are provided, which, together with the screws *A' b b*, hold said adjustable frame in position.

The frame part B is shown as seated on the frame part A, and is held there mainly by the screw *A'*, which passes up through a slot in the frame A, a washer, *a''*, being interposed between them, which fits into said slot, as shown. The screws *b b*, which pass through this frame part B and enter the lug *a'*, assist

in holding it in position, and also serve to adjust it so as to draw one end or the other of the file forward, making said file line more or less accurately with the face of the tool which rests against the saw, as may be desired. The upwardly-projecting studs *b'* of this frame, against which the file rests, are preferably inclined back somewhat from the line of the face, as shown, so as to cause said file to operate against the points of the teeth at something of an angle, so that the extreme corners of the teeth shall project slightly farther than the sides below.

The clamp C is arranged to come against the top edge of the file and grip it between itself and the projections *b'' b''* on the frame B, and is held in position by a clamp-screw, *C'*. It is angular in cross-section, and its vertical flange passes down between the studs *b' b'* and another stud, *b''*, which is provided for that purpose, as shown in the drawings.

The file D may be any ordinary file of suitable size and shape; or a piece of stone or emery might be substituted for the file without departing from my invention.

This device is intended, mainly, for dressing the sides of the points of large circular saws after they have been swaged, and in operation it is held against the sides of the saw while the latter is revolved, the face portions of the frame A being held closely against the saw in such position that the face of the file will just come in contact with the sides of the points of the teeth.

Having thus fully described my said invention, what I claim as new, and desire to secure by Letters Patent, is—

1. A saw-dresser for dressing the sides of the points of saw-teeth, consisting of a main frame, A, having a face adapted to be held against the sides of the saw, and a transversely-adjustable frame, B, mounted on said frame A and carrying the file or other similar device, substantially as set forth.

2. The combination, in a saw-dresser, of the frame A, the adjustable frame B, mounted thereon and held on said frame A by screws *A' b b*, substantially as set forth.

3. The combination, in a saw-dresser, of the frame A, the adjustable frame B, the file D, 100

and the clamp C, said file D being placed upon
projections b^2 b^2 against studs b' b' , and said
clamp being held against the upper edge of
said file by a clamp-screw, C', and held in po-
5 sition by its vertical flange passing between
the studs b' b' and the stud b^2 , substantially as
shown and described.

In witness whereof I have hereunto set my
hand and seal, at Indianapolis, Indiana, this
this 14th day of June, A. D. 1887.

ROBERT E. POINDEXTER. [L. S.]

In presence of—

C. BRADFORD,

CHARLES L. THURBER.