

April 12, 1949.

F. R. WEAVER

Des. 153,407

SAW HANDLE

Filed June 5, 1948

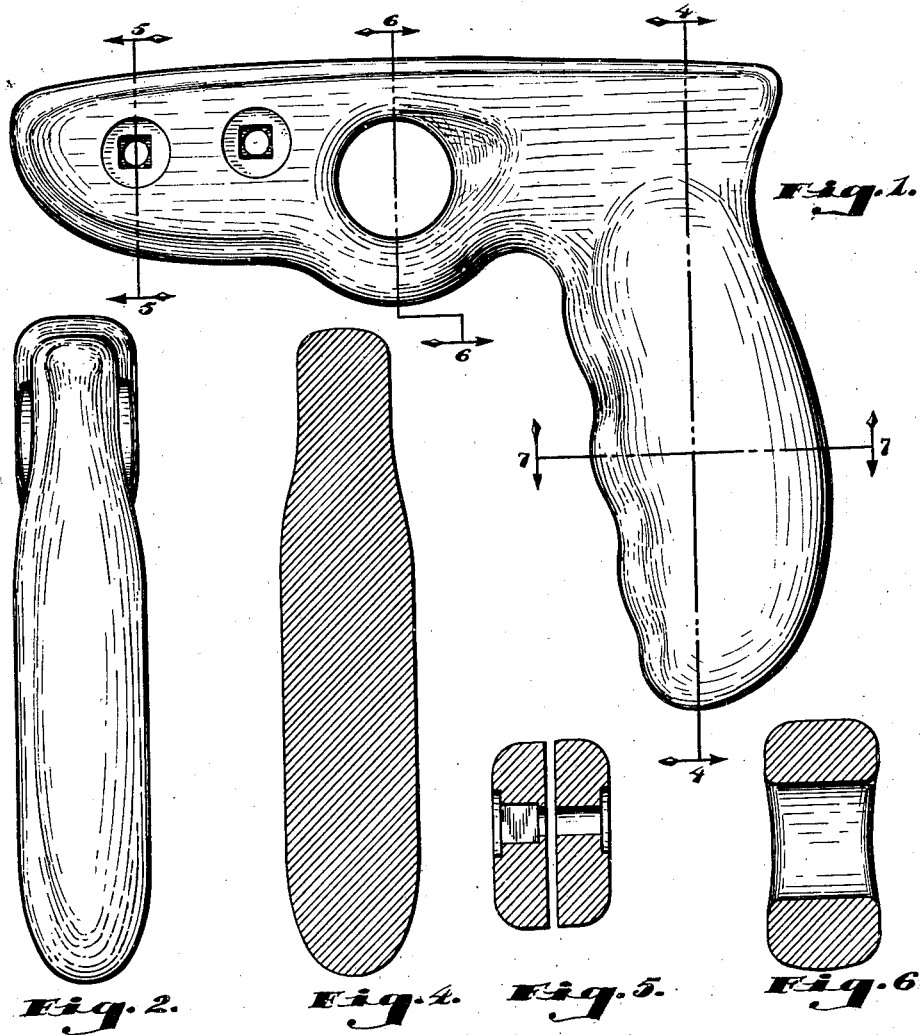


Fig. 2.

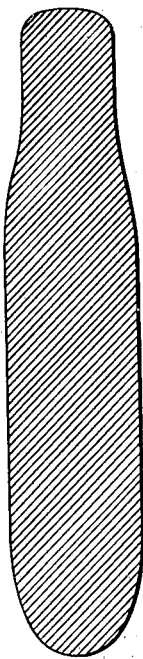


Fig. 4.

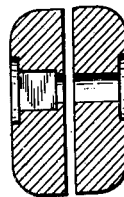


Fig. 5.



Fig. 6.

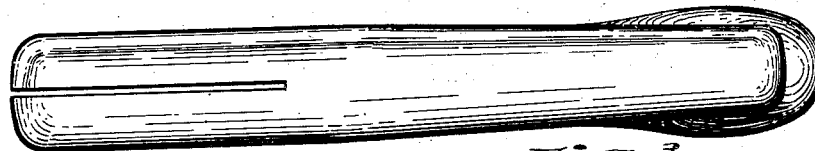


Fig. 3.

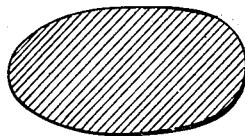


Fig. 7.

INVENTOR.
FRANK H. WEAVER,

BY:

Harold B. Hood.
ATTORNEY.

UNITED STATES PATENT OFFICE

153,407

DESIGN FOR A SAW HANDLE

Frank R. Weaver, Indianapolis, Ind., assignor to
E. C. Atkins & Company, Indianapolis, Ind., a
corporation of Indiana

Application June 5, 1948, Serial No. 146,774

Term of patent 14 years

(Cl. D93—4)

To all whom it may concern:

Be it known that I, Frank R. Weaver, a citizen of the United States, residing at Indianapolis, in the county of Marion and State of Indiana, have invented a new, original, and ornamental Design for Saw Handle, of which the following is a specification, reference being had to the accompanying drawing, forming part thereof.

In the drawings,

Fig. 1 is a side elevational view of a saw handle, showing my new design;

Fig. 2 is a rear end elevational view thereof;

Fig. 3 is a top plan view thereof;

Fig. 4 is a vertical sectional view thereof taken substantially on the line 4—4 of Fig. 1 and looking in the direction of the arrows;

Fig. 5 is a vertical sectional view thereof taken substantially on the line 5—5 of Fig. 1 and looking in the direction of the arrows;

Fig. 6 is a vertical sectional view thereof taken substantially on the line 6—6 of Fig. 1 and looking in the direction of the arrows; and

Fig. 7 is a horizontal sectional view thereof taken substantially on the line 7—7 of Fig. 1 and looking in the direction of the arrows.

I claim:

The ornamental design for a saw handle, as shown.

FRANK R. WEAVER.

REFERENCES CITED

The following references are of record in the file of this patent:

UNITED STATES PATENTS

Number	Name	Date
D. 112,884	Manning	Jan. 10, 1939

OTHER REFERENCES

Hardware Age, Oct. 9, 1947, page 192, Plymouth "P-3."